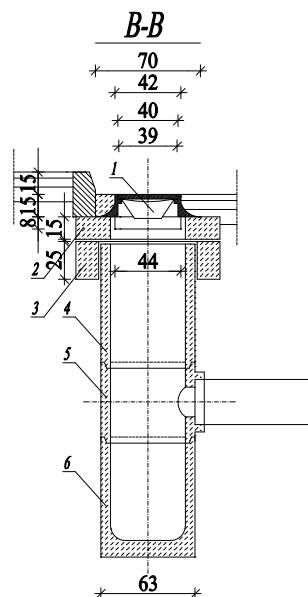
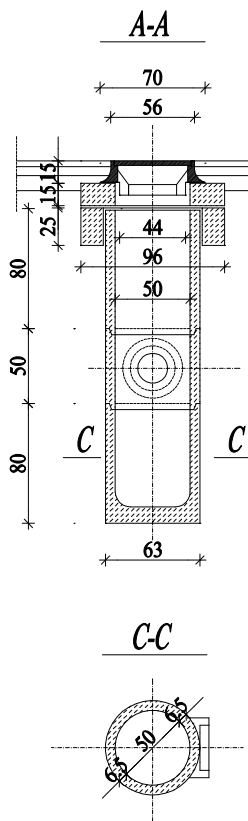
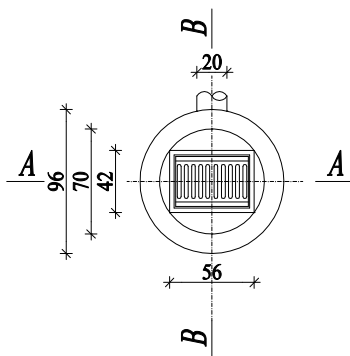


SKALA 1:50

- ## WIDOK Z GÓRY



A diagram of a rectangular prism. The top edge is labeled 96. The front edge is labeled 50. The right edge is labeled 23. The prism is divided into three sections by two vertical dashed lines. The left and right sections are shaded with diagonal lines. The middle section is white.

The diagram shows a rectangular floor with a total width of 96 and a total height of 25. The floor is divided into three horizontal sections: a top section of height 15, a middle section of height 66, and a bottom section of height 15. The floor is covered with square tiles. The top and bottom sections are filled with tiles, while the middle section is empty.

Technical drawing of a mechanical part, likely a bracket or support, showing dimensions in millimeters. The part has a rectangular base with a semi-circular cutout on the right side. Dimensions include overall width of 63 mm, base thickness of 3 mm, and various internal and external radii and heights.

Robert Wiczorkowski 59-800 Lubań, ul. Moniuszki 10
tel. +48(75)7215525

Temat: Adres:	BUDOWA CHODNIKA W m. ŚWIERADÓW ZDRÓJ W CIĄGU DROGI WOJEWÓDZKIEJ NR 358		
Tytuł rysunku:	ŚCIEK PODCHODNIKOWY I UMOCNIE NIE WYLOTU	Data:	07.2011 r.
Stadium:	WPUST ULICZNY ϕ 500 mm	Skala:	1:50
Projektant:	mgr inż. Robert Wieczorkowski	Podpis:	Nr rys.
Sprawdził:		Podpis:	7